

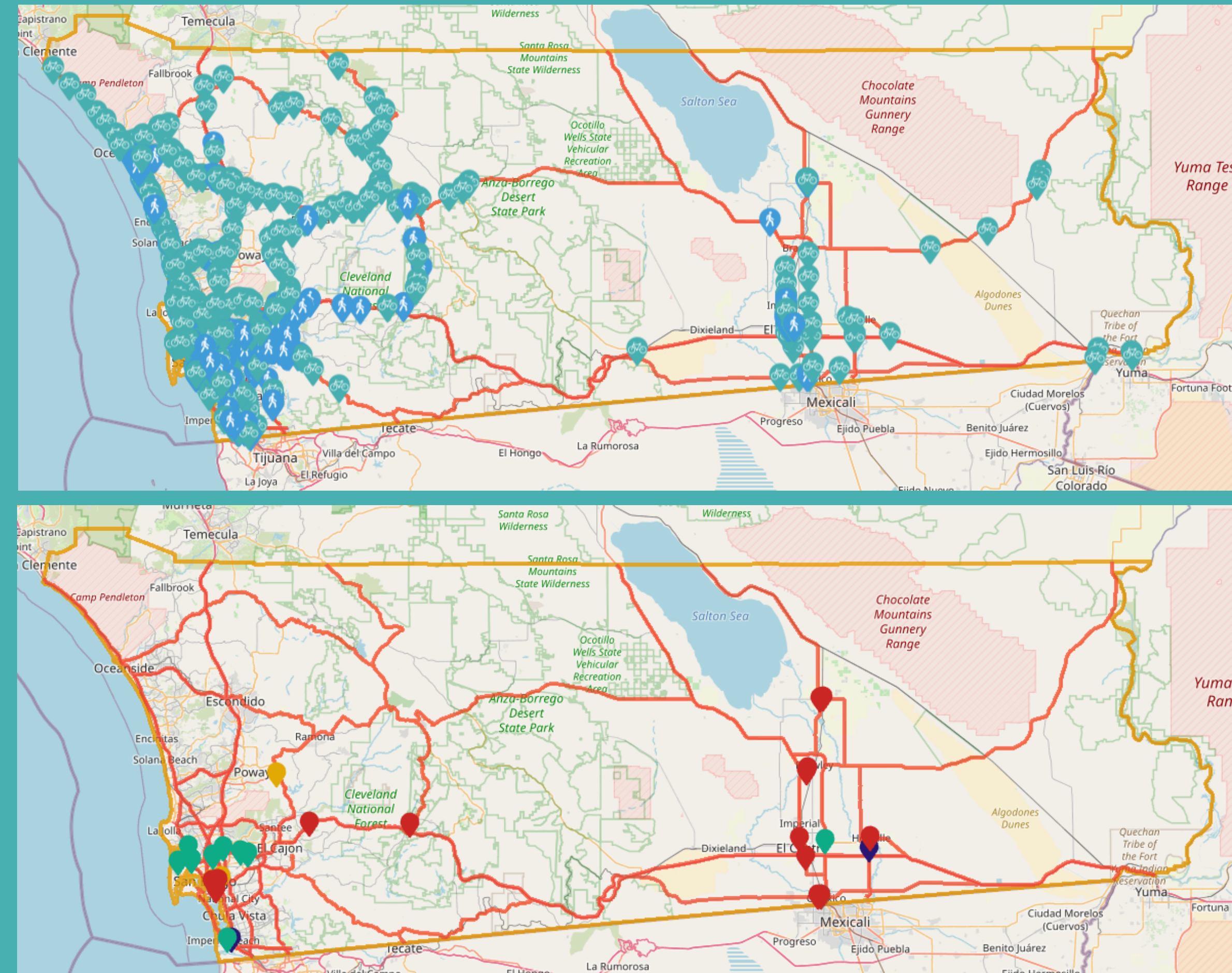
District 11 Caltrans Active Transportation Plan



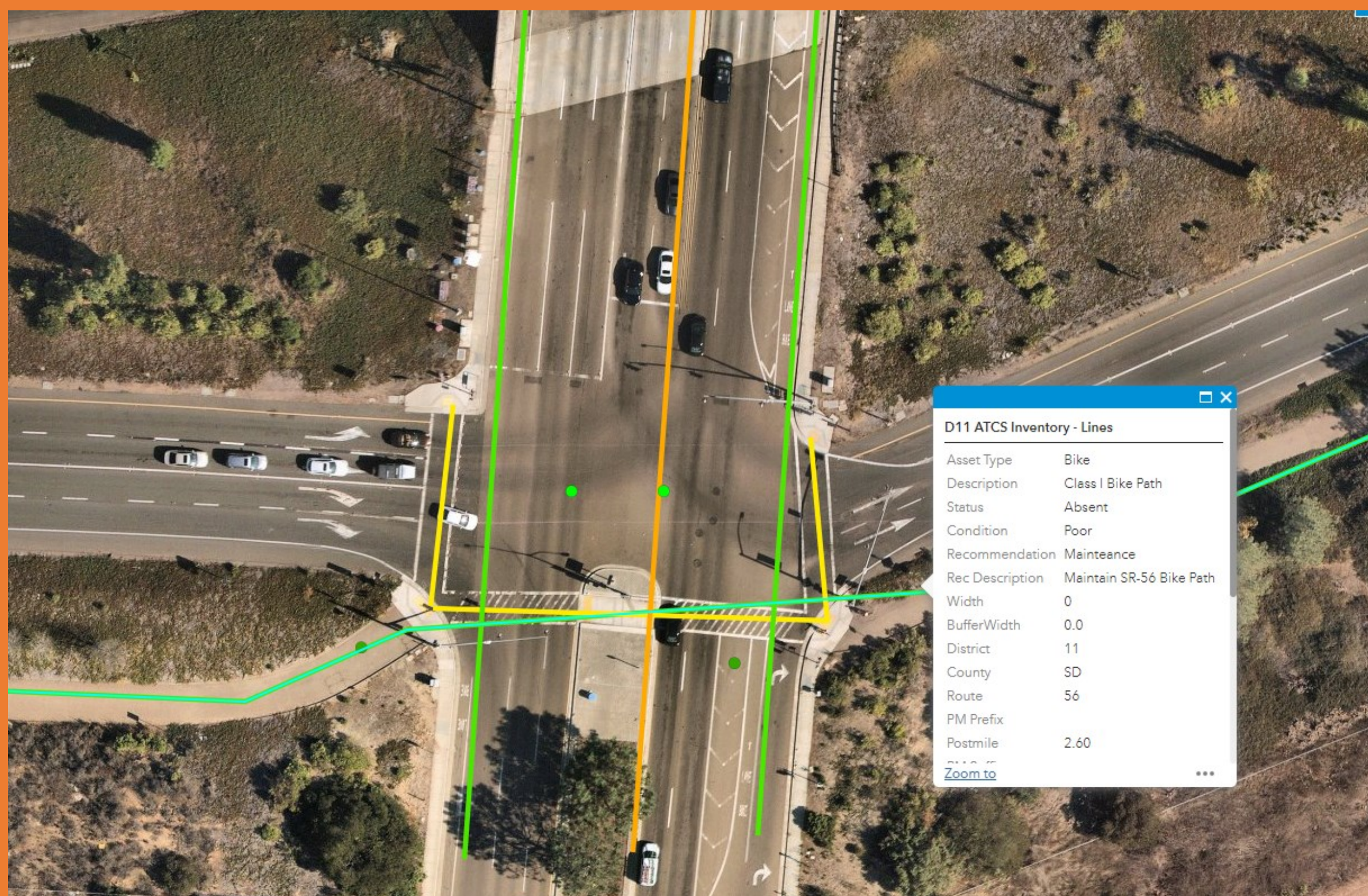
The D11 Multimodal Programs Branch team created heavy duty stickers with QR codes that link to the [Caltrans Active Transportation Plan survey](https://www.caltrans.gov/active-transportation-plan). These QR stickers were placed on the ground within the right-of-way where people walking, biking, or rolling could see them and scan their devices to access the survey.

This “virtual “ and “socially distanced” method of outreach was created during the beginning of the COVID-19 Pandemic when we were figuring out ways to operate non-traditionally. This method proved to be effective.

Below are examples of how the QR stickers were placed.



The “Clowder” Tool was created by the consultant Tierra Plan and allows us to visualize and track survey responses from the public (top) and our partners (bottom). This input will help us to develop better active transportation facilities across District 11.



The D11 GIS Team created the Active Transportation and Complete Streets Asset Inventory Data Viewer as a platform to more efficiently and effectively catalog and track existing and planned complete streets facilities.



The D11 Multimodal Programs Branch team filmed outreach videos in [English](#) and [Spanish](#).

Caltrans Needs Your Input

Caltrans District Active Transportation Plan

Whether you use active transportation or prefer to drive, you may have noticed areas where improvements could be made for those who walk, ride bikes, or use mobility devices.

Caltrans is currently developing its first Active Transportation Plan for San Diego and Imperial Counties. With your help, the Plan will identify active transportation needs on, across, or near the State Highway System.

Your input will help Caltrans prioritize active transportation improvements that make travel more comfortable and convenient for pedestrians, bicyclists, and transit users in your community.

With Caltrans interactive survey, you can use a computer or smart phone to indicate areas where you feel there are opportunities for improvement.

We want to hear from you!

Caltrans Necesita Su Opinión

Plan de Transporte Activo del Distrito de Caltrans

Ya sea que usted use transporte activo o prefiera manejar, es posible que haya notado áreas en las que se podrían hacer mejoras para aquellas personas que caminan, andan en bicicleta, o usan dispositivos de movilidad.

Caltrans está desarrollando su primer Plan de Transporte Activo para los Condados de San Diego e Imperial. Con su ayuda, el Plan identificará necesidades de transporte activo en, a lo largo de, o cerca del Sistema Estatal de Carreteras.

Su colaboración ayudará a Caltrans a determinar prioridades de mejoras de transporte activo que hagan el viajar más cómodo y conveniente para peatones, ciclistas, y usuarios del transporte público en su comunidad.

Al tomar la encuesta interactiva, usted puede usar una computadora o teléfono inteligente para indicar áreas donde crea que existen oportunidades para mejorar.

¡Queremos escuchar sus opiniones!



For more information, scan here to watch the video on our website:



Para mayor información, vea este video.

<https://www.caltrans.gov/district-11>

Or, to go directly to the survey, scan here:



Para tomar la encuesta escanear aquí.

<https://survey.caltrans.gov/Survey?sid=11>



Fliers and posters in English and Spanish were circulated throughout the district to inform people about the plan and engagement activities.